



Quick Start Guide

Contacting Breezy Med

For product information, sales, service, and technical support:

Phone: (833) 273-3991

Email: info@breezymed.com

Product Overview



Overview of Gen 2 Smart Controller device.

1. Power Key
2. USB Connector – Plug in cable and power supply to charge device.
3. Gesture Navigation Bar – Used to navigate to home screen.
4. Volume -
5. Volume +

Quick Setup

Power on the Breezy Smart controller

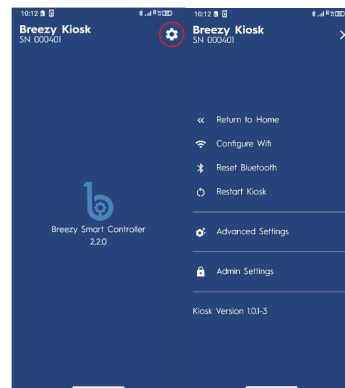
Power on the controller pressing and holding the power key for about 5 seconds until the controller screen turns on.

Note

If the Controller has been preconfigured by Breezy Med for your site, skip to **Connect to Breezy Blue Device** section

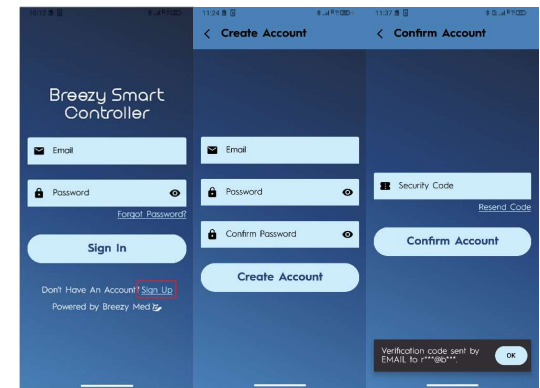
Setup Wifi – optional

- Swipe up from bottom of screen to display Breezy Kiosk.
- Press icon in top corner of the screen
- Press "Configure Wifi"
- Select Wifi network and enter Wi-Fi password if needed.
- Press the back arrow to return to Breezy Kiosk

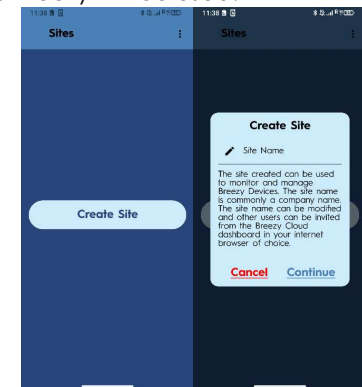


Sign up or sign into user account

- The Breezy Smart Controller app will automatically launch
- Press *Sign Up* or sign into an existing account. If *Sign Up* is selected, an email and a password will be required. One-time email verification will be required for the first sign in.



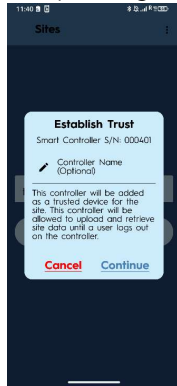
- If a new account is created, press the *Create Site* button and enter a site name. The site name is normally the company or building name where Breezy will be used.



- Select the site the controller should be associated with from the drop-down list. Some users may have multiple sites to choose from.

Add Controller to site

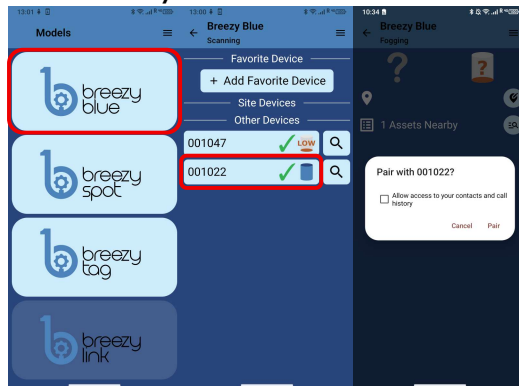
- Add the controller to the site by optionally naming the controller (user's name, floor in building, etc.) and pressing continue.



- Once paired, the fogging page will load.
- If a yellow ✕ is shown instead of a green ✓ on the fogging screen, press the button on top of Breezy Blue.
- Press desired room size button to begin a fog event on the device control screen.



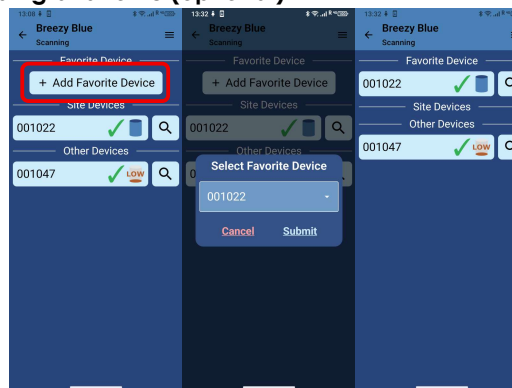
Connect to Breezy Blue Device



- Press the breezy blue button to control Breezy Blue devices.
- Select the device to be controlled from the list. Note that the device name from the factory will be shown as its serial number. The serial number is on the bottom label of Breezy Blue.
- Press PAIR

- Leave the area until Breezy Blue waistband light returns to blue color.
- The device will be shown as a site device on the scanning screen when the back button is pressed.

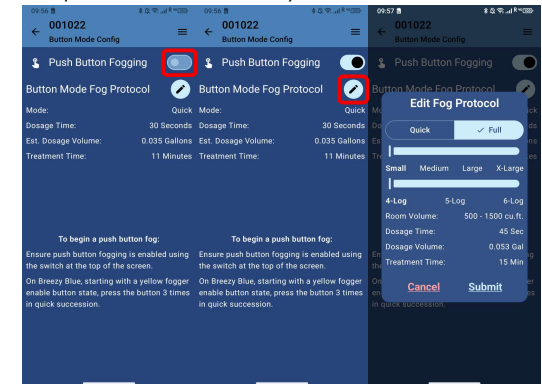
Adding a favorite (optional)



- On the scanning screen, press the + Add Favorite Device button
- Select favorite device from drop down list and press Submit
- Favorite device will now show at the top of the screen.

Configuring Push Button fogging (optional)

- If it is desired to enable push-button fogging mode from the button on top of Breezy Blue, configure it as shown below
- Push-button fogging protocol can be updated from the default 30 second quick protocol and will persist on the Breezy Blue device.



- To use push button fogging: Starting from a yellow fogger enable button state, press the button 3 times in quick succession. The waistband light will begin flashing red and fogging will begin in 7 seconds.

Additional Information

Further product information and the complete user manual can be found at

<https://breezymed.com/support>

Fogging Using Controller